



# Emergency Generator/ATS Training System

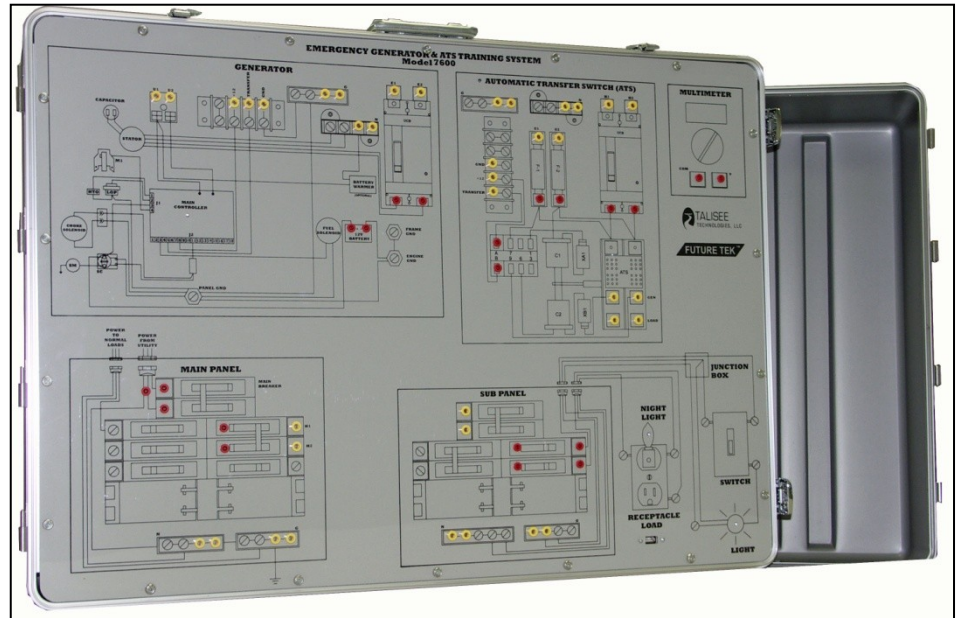


## Objectives

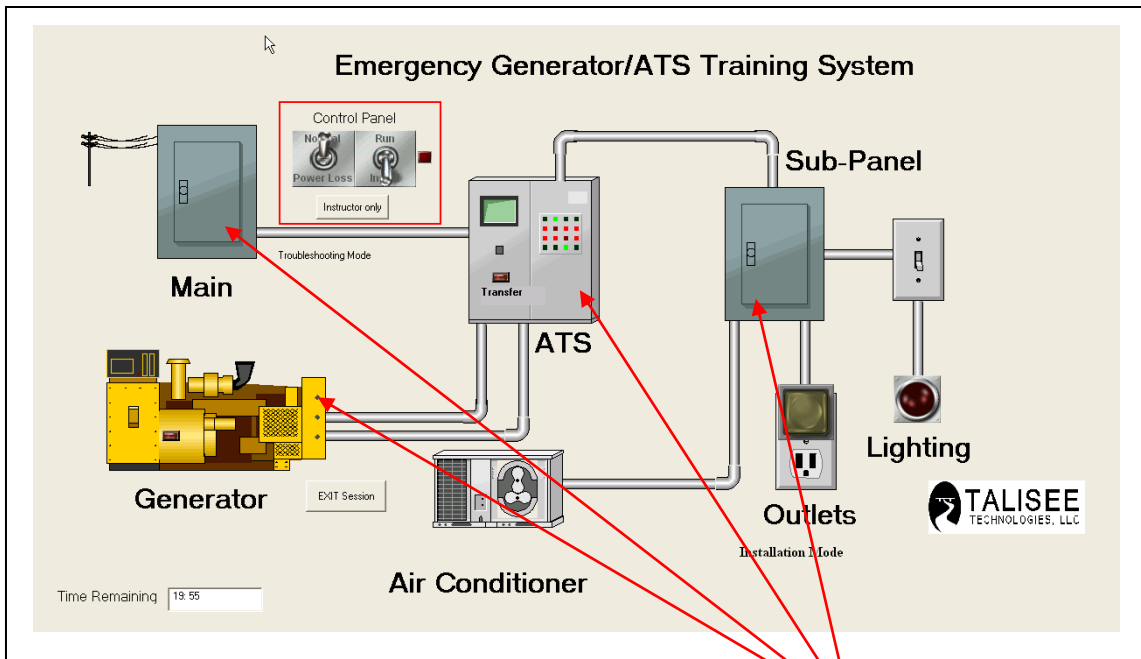
- **Installation** of Generator Sub-panel, and Automatic Transfer Switch
- **Testing** the Installation
- **Troubleshooting** with Random or Instructor Entered Faults

## Components

- Main Power Panel
- Automatic Transfer Switch
- Emergency Sub-Panel
- LNG Generator

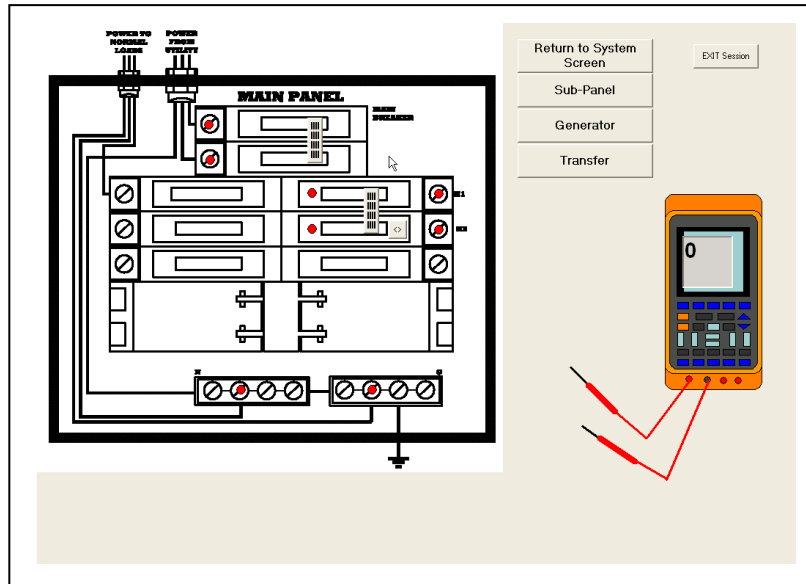


## System Overview Screen



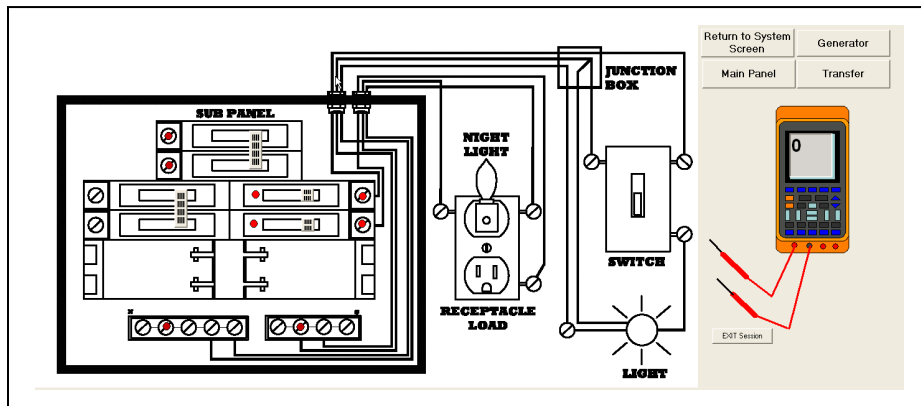
Take a look inside the panels

## 200 Amp Main Panel Screen



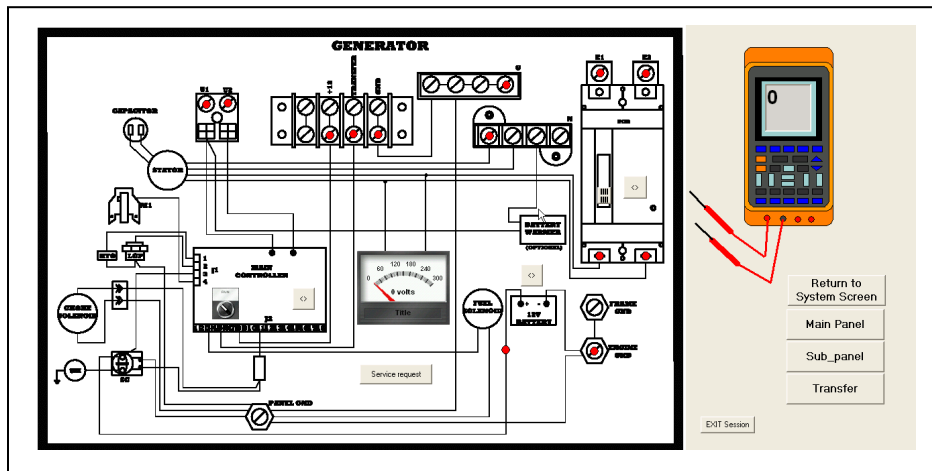
- 2 Operable Breakers
- 8 Test Points
- 4 Wiring Nodes

## 100 Amp Sub-Panel Screen



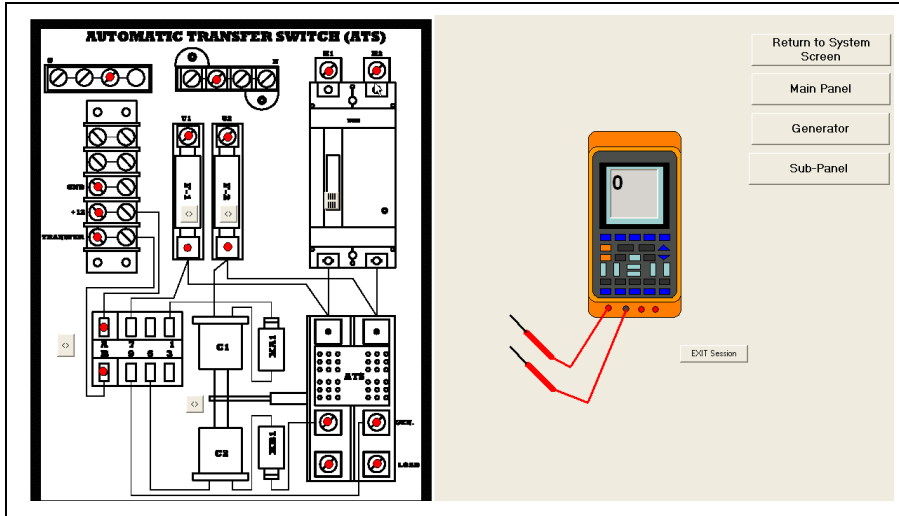
- 2 Operable Breakers
- 8 Test Points
- 4 Wiring Nodes

## Natural Gas Generator Screen



- 20 KW Generator
- Operable Breaker
- Run/Stop Switch
- 13 Test Points
- 9 Wiring Nodes
- Controller
- Battery

# Automatic Transfer Switch Screen



- 100 Amp Transfer Switch
- Operable Breaker
- Control Relay
- 17 Test Points
- 13 Wiring Nodes
- 2 Replaceable Fuses

## Key Features

- One click instructor wiring check
- Software models actual wiring
- Breakers trip on overcurrent
- Voltage measurement with multi-meter
- Software remembers wiring configuration

## Installation and Testing

- Student wires the components
- Install / test modes
- Student performs startup and test

## Troubleshooting

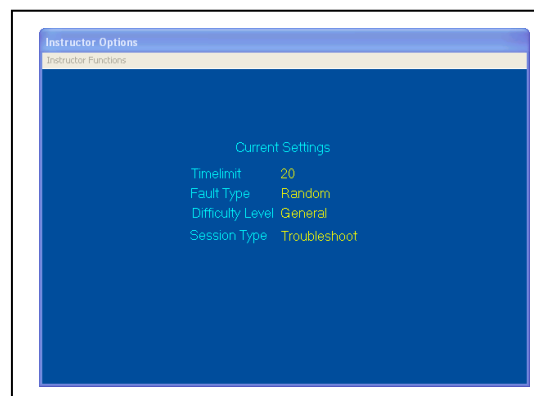
- Instructor can select faults and build fault tables
- Software can generate faults
- Software tracks student's actions
  - Measurements
  - Component replacement
- Two types of troubleshooting sessions
  - Tutorial
  - Service call
- Student can replace components
  - Breakers
  - Control relays
  - Control boards
  - Battery
  - Fuses
  - ATS mechanical switch

## Reports

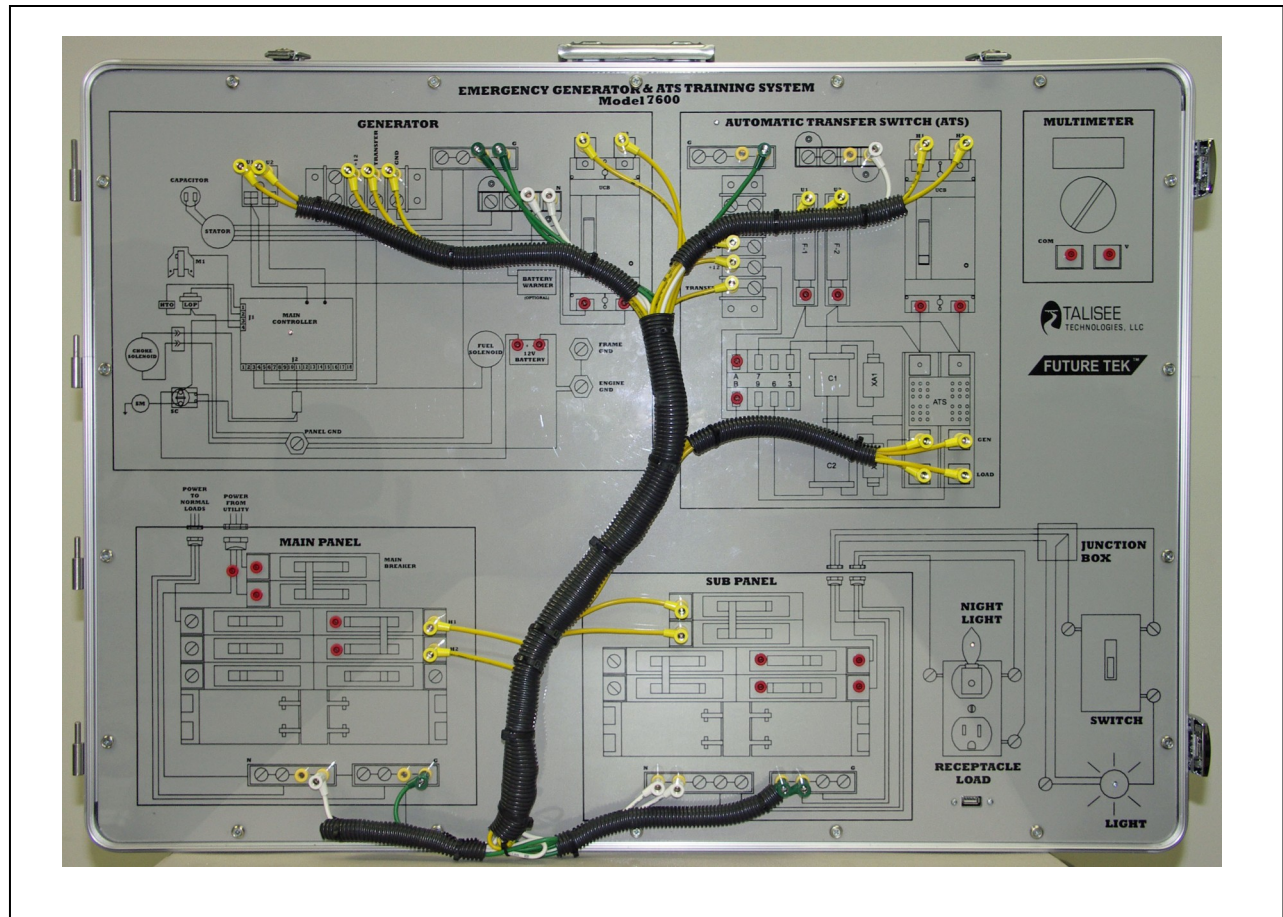
- Session Overview Report
- Detailed Troubleshooting Report

## Instructor's Options

- Select session type
- Select faults
- Set session time
- Print reports
- One click wiring check



## A Complete Training Package



### Check Out Our Other Products

- Motor Control Troubleshooting (Model 7100)
- PLC/Motor Control Troubleshooting (Model 7100-P1)
- Heat Pump Training (Model 7130)



Please contact your Future Tek sales representative or call us at Talisee Technologies LLC for more information about this and other products.



Future Tek Inc.  
663 S. Frontage Rd.  
Columbus, MS. 39701  
1-888-299-0864

194 O'Daniel Point Rd  
Eclectic, AL. 36024  
(334) 399-6142

*'...enhancing career opportunities through technology and education...'*