

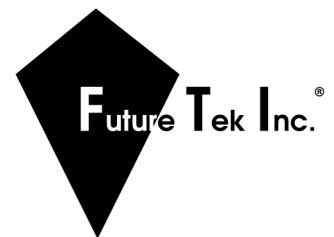
FUTURE TEK, INC

“Real-World” Trainers For “Real-World” Jobs

CWT Line of Commercial/ Industrial Wiring Training Systems

The CWT Line of trainers are unique in that they provide real interactive training which includes physically connecting industry parts and electrical devices. These trainers use real industry components and allow the student to experience what is actually encountered in the field.

Developing a good understanding of electrical systems and components is vital to every student as they develop their skills. These trainers give them the resources and the insight to develop new skills or sharpen their existing knowledge.



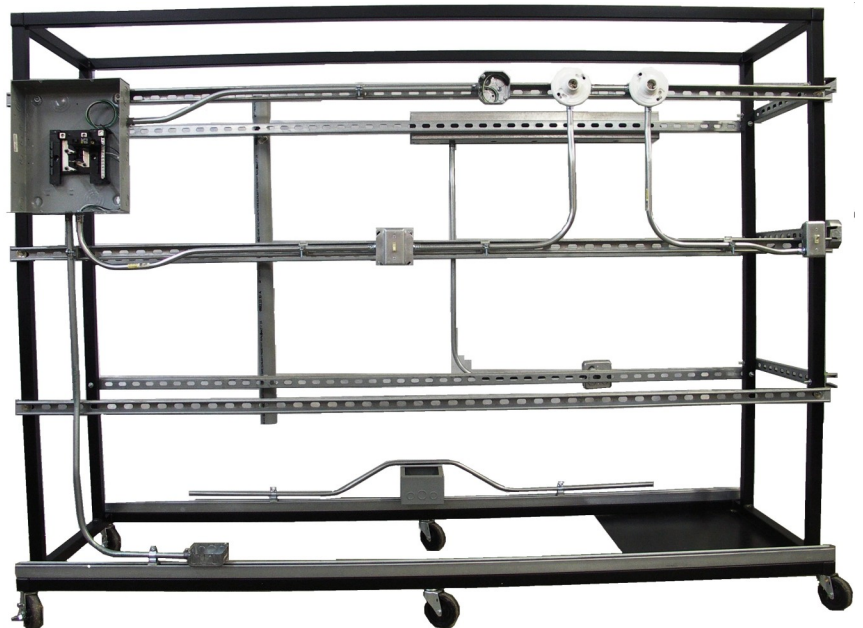
FUTURE TEK, INC

663 South Frontage Road
Columbus, MS 39701

Phone: 888-299-0864

Fax: 662-328-8584

E-mail: suzanne@futuretekinc.com

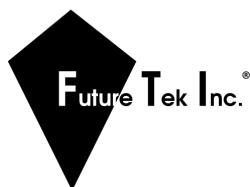


An Overview

Beginning with the Basic Conduit Installation Trainer (CWT100), components and curriculum may be added producing the Commercial Wiring and Conduit Trainer (CWT200), or cover it all with the Commercial and Industrial Wiring Trainer (CWT300)

These trainers provide a wide variety of learning opportunities and hands-on lab experience. They are designed to accommodate students who are studying commercial wiring installation, industrial wiring, EMT conduit bending techniques, rigid threaded conduit, Liquidtight® installation, and motor controls circuits. Students may also develop their skills in connecting circuit breakers, three and four way switches, single and three phase motor connections, photo control, lighting timers, flexible conduit installation, and motor disconnecting means. A student guide is provided with blueprints for a wide variety of conduit installation, motor connections, motor controls, and wiring experiments.

This series is built to last, constructed with 1 1/2" metal tubing frame with 1 5/8" x 3/4" metal strut to attach a variety of components. The metal strut allows for modification and relocation of the components to meet the needs and demands of a variety of lab experiments. The boxes and components are attached to the strut with clamps and screws which allow for excellent versatility. The trainers have a sturdy structure that allow students the necessary space to make conduit bends, pull wire, attach several components, and make connections. The trainers also offer another advantage in that they are completely mobile with six, 4" polyurethane wheels. The units are complete with the components necessary to perform many different electrical related projects. Handy component bins are mounted on the side and bottom of the trainers for easy access and storage.



Curriculum

The student guides include a set of project layouts that guide the student through different commercial/industrial wiring and conduit installation scenarios. The projects are blueprints that include measurements for component locations and the descriptions of what is involved in each project. A materials list is provided on each blueprint to ensure that the student completes the projects correctly. Each of the projects require between 1 to 3 hours to complete for a total of over 40 hours of hands-on training. These trainers are not limited to just the projects provided in the student guide. The Commercial and Industrial Wiring Trainers provide unlimited flexibility in hands-on lab assignments and offer the students and instructors the ability to customize many additional lab experiences to meet your training demands.

Available Models

Model CWT100
Basic Conduit Installation Trainer

Model CWT200
Commercial Wiring and Conduit Trainer

Model CWT300
Commercial and Industrial Wiring Trainer

Made in the U. S. A.